



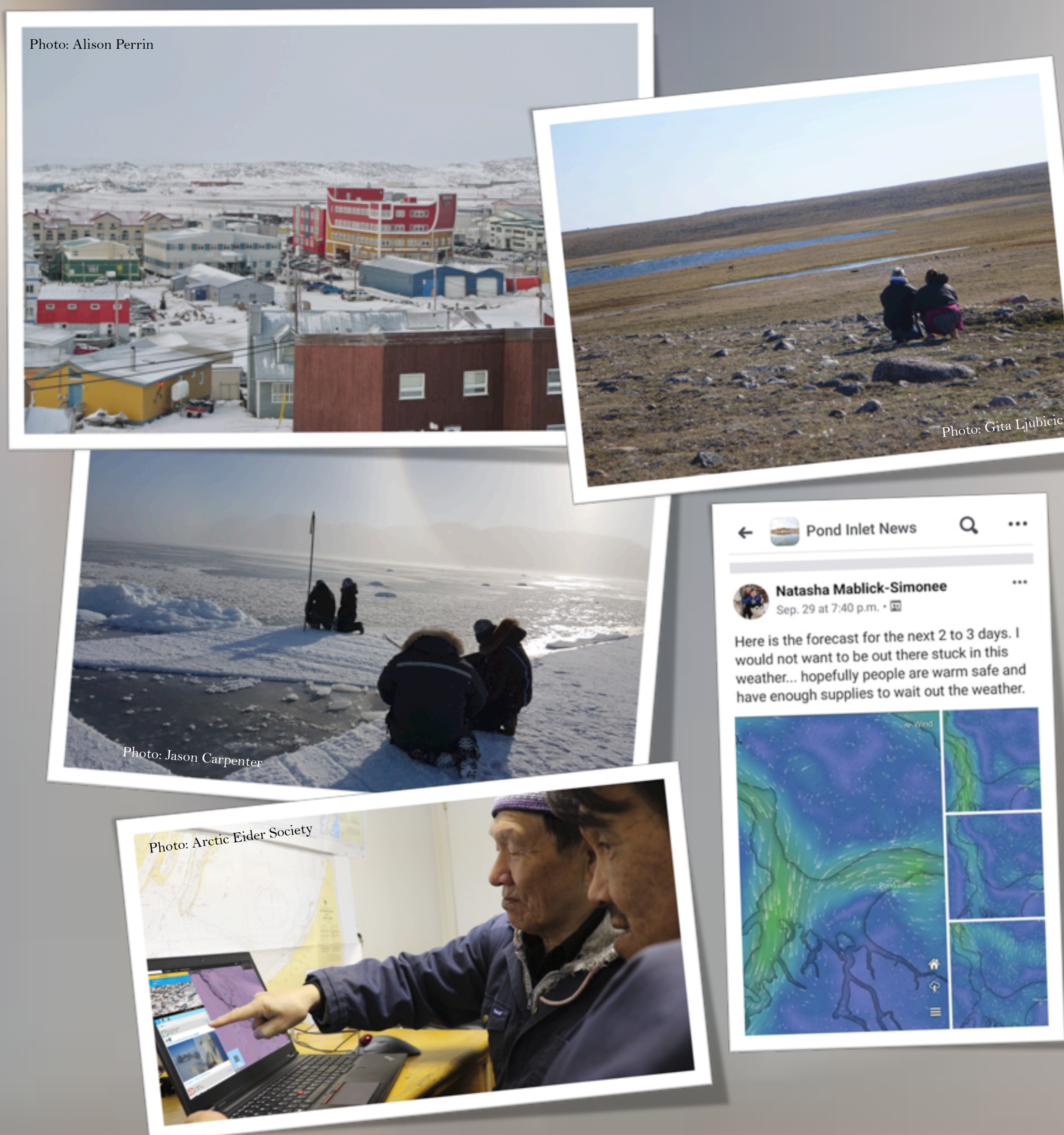
# Understanding Inuit Community Uses and Needs for Weather, Water, Ice and Climate Information and Services



ArcticNet Project 25

## BACKGROUND AND MOTIVATION

- Weather, water, and ice conditions in Inuit Nunangat have become increasingly unpredictable due to the combined effects of climate change and industrial development.
- Rapid social and political changes have also impacted the inter-generational transfer of Inuit knowledge and subsistence harvesting practices.
- Taken together, these pressures are creating challenges for Inuit and northerners to travel safely on the land (including water and ice).
- For years our team has been hearing that weather, water, ice, and climate information and services are not easy to access, understand, or use, and that they are not always accurate or relevant for local conditions.



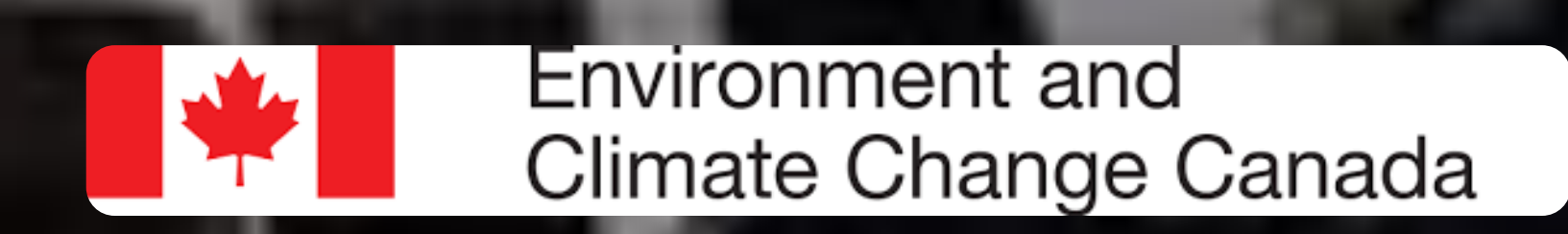
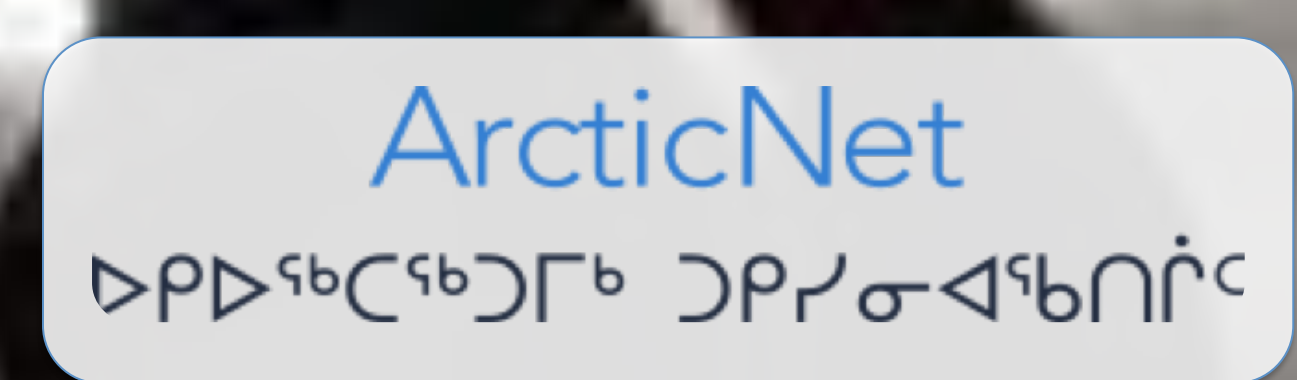
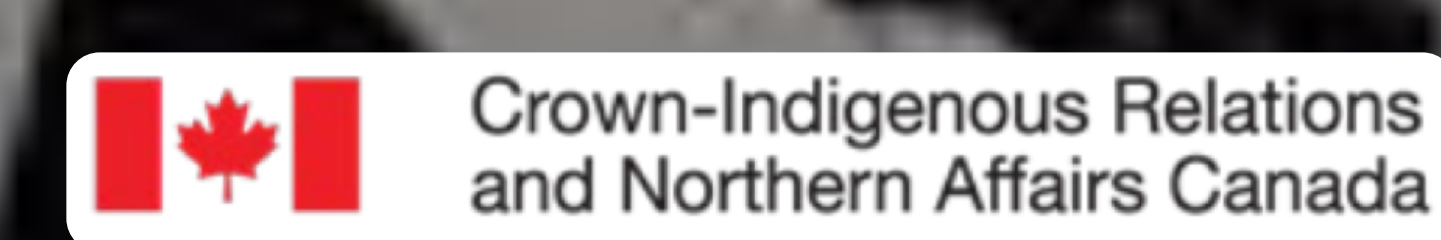
- ## SURVEY
- We developed a survey to get a wide range of feedback from youth, men, and women of different ages and experience levels across three regions of Inuit Nunangat.
  - Surveys will be facilitated by Local Research Coordinators in each partner community.
  - Survey responses will provide valuable insights into:
    - ✓ **travel habits** in different seasons and for different reasons;
    - ✓ **important weather, water, ice and other environmental conditions** that are considered when making travel decisions;
    - ✓ **uses of community information sources** such as personal observations, talking with and asking advice of other community members, community-based monitoring programs, and social media;
    - ✓ **uses of information sources from regional, national, and other polar service providers** such as weather and marine forecasts, ice charts and services, tide tables, and satellite imagery;
    - ✓ **related opportunities and challenges** for training, communications, and climate services.

## OUR TEAM

- Our project builds upon long-term community research partnerships in 15 communities across Nunavut, Nunavik, and Inuvialuit regions.
- Our team brings together 37 Inuit, northern, and southern researchers in a networked approach to community-based research.

- ## GOAL
- We want to learn what kinds of weather, water, ice, and climate information and services Inuit and northerners use to make safe travel decisions.
  - Our goal is to inform efforts by community organizations, service providers and decision-makers to improve the information and services available to support safe travel in northern communities

To learn more about this project, contact:  
[wwic.surveys@gmail.com](mailto:wwic.surveys@gmail.com)



Background Photo: Jason Carpenter